

BLAZING SPEED

P 21⁺

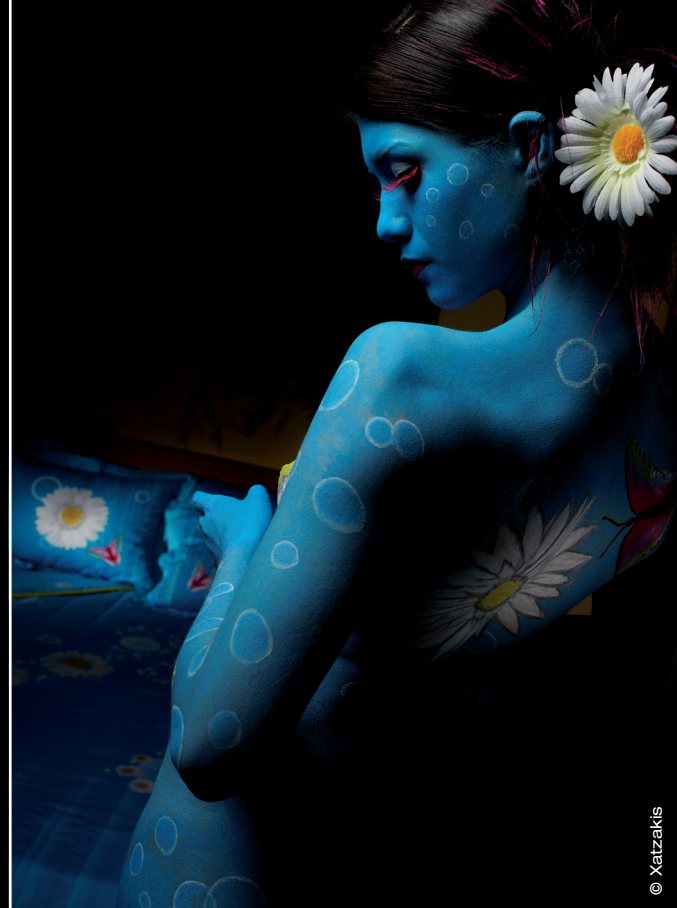
The power of speed and grace

The Phase One P 21+ camera system offers a high-speed capture rate of up to 70 frames per minute. The 18 mega pixels, 16-bit capture makes this the perfect solution for retail fashion, weddings, portraits or almost any application that needs speed and quality.

Unlimited burst capacity provides high-speed capture for as long as your shooting sequence needs. For volume production and table-top product photography, simply adapt the P 21+ digital back to a large format technical camera.

PHASEONE

what the world's best photography is made of



P 21⁺

- Blazing speed without compromise
- World leading image quality
- Unlimited burst capacity
- Small file sizes
- Light sensitivity 100-800 ISO
- 18 mega pixels
- Rectangular format sensor 4:3



SPECIFICATIONS:

Imaging technology

| | |
|---------------------|--------------------------|
| CCD: | Less than full frame CCD |
| Lens Factor: | 1.3 |
| Resolution: | 18 mega pixels |
| Active pixels: | 4904 x 3678 pixels |
| CCD size effective: | 44.2 x 33.1 mm |
| Pixel size: | 9 x 9 |
| Image ratio: | 4:3 |
| Microlens on CCD: | Yes |
| Antiblooming: | 10 f-stops |
| Dynamic range: | 12 f-stops |

Storage files

Phase Ones IIQ RAW file format speeds up the image capture and file transfer. Increases the storage capacity by turning the full 16 bit image data into a compact RAW file format. The default IIQ RAW-large format is completely lossless.

| | |
|------------|-------|
| IIQ small: | 13 MB |
| IIQ large: | 20 MB |

Output files

| | |
|--------------|------------------|
| Color depth: | 16 bit per color |
|--------------|------------------|

| | |
|---------------------|---------------------------------|
| Image file formats: | TIFF-RGB, TIFF-CMYK, JPEG |
| Color management: | RGB, Embedded ICC profile, CMYK |

Sensitivity

| | |
|------|--------------------|
| ISO: | 100, 200, 400, 800 |
|------|--------------------|

Camera system

| | |
|-------------------|---|
| Capture time: | 0.8 sec./frame |
| Storage security: | Phase One 3S technology - Secure Storage System |
| Battery type: | 7.2 V Lithium Ion 2500mAh |
| Battery lifetime: | 5000 captures/4 hours |
| Exposure time: | 1/10,000 sec. up to 1 hour with XPose+ technology |
| Live preview: | Yes |
| IR filter: | Mounted on CCD |
| Cooling system: | Passive cooling and sleeping architecture |
| Power up time: | Less than 2 sec. |
| Power: | 8-33 V DC (from FireWire®) |

LCD screen

| | |
|----------------|----------------|
| Size: | 2.2" |
| Resolution: | 230,400 pixels |
| Viewing angle: | 160° |

P+ back mounts

| | |
|-------------------|---|
| Phase One/Mamiya: | Phase One 645 AF Mamiya 645AFD-series Via adaptor: Mamiya RZ67 Pro IID |
|-------------------|---|

| | |
|-----------------|----------------------|
| Phase One H101: | Hasselblad H1 and H2 |
|-----------------|----------------------|

| | |
|---------------|---|
| Hasselblad V: | Hasselblad 555ELD, 533ELX, 503CW and 501CM Via adaptor: Mamiya RZ67 Pro II Mamiya RB67 |
|---------------|---|

| | |
|-------------|----------------|
| Contax 645: | Contax 645 AFD |
|-------------|----------------|

Wide angle & technical cameras

Possible via the Phase One Flexadaptor & third party adaptors.

Operating conditions

| | |
|--------------|----------------------------------|
| Temperature: | 0° to 40°C (32° to 122°F) |
| Humidity: | 15 to 80% RH (non-condensing) |

Lighting

Supports all photographic lights:
Flash, tungsten, daylight, fluorescent, HMI

Computer minimum requirements

| | |
|------|--|
| Mac: | G4, 500 MB RAM, FireWire® interface, Mac OS X 10.3.9 or later. |
|------|--|

| | |
|-----|---|
| PC: | Pentium III, 500 MB RAM, IEEE 1394 interface, Windows XP/2000 |
|-----|---|

Software

Capture One DB or Capture One Pro

Certifications

CE

Phase One A/S

Roskildevej 39
DK-2000 Frederiksberg
Denmark
Tel.: +45 36 46 01 11
Fax: +45 36 46 02 22
Email: info@phaseone.dk

Phase One Inc. - USA

200 Broadhollow Road
(Suite 312)
Melville, NY 11747 - 0983
Tel.: +1 631 547 8900
Fax: +1 631 547 9898
Email: info@phaseone.com

Phase One Germany

Oskar-Jäger-Str. 160
D-50825 Köln - Germany
Tel.: +49 (0)221 54 02 26 - 0
Fax: +49 (0)221 45 02 26 - 22
Email: info@phaseone.de

www.phaseone.com

Phase One support: <http://support.phaseone.com>

dealer stamp

Phase One Asia

Qing Hai Lu, 138, 25B
Jing An District
Shanghai 200041
China
Tel.: +86 21 63842854
Fax: +86 21 55217747
Email: lzm@phaseone.com

Phase One Japan

#302,2-11-1 Nakano
Nakano-ku, Tokyo
Japan 164-0001
Tel.: +81 3 3229 0977
Fax: +81 3 3229 0987
Email: japan@phaseone.com

April 2008 186706900/2500.

